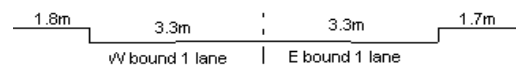


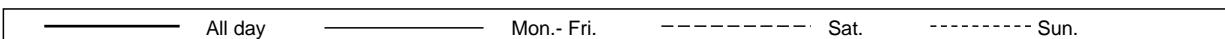
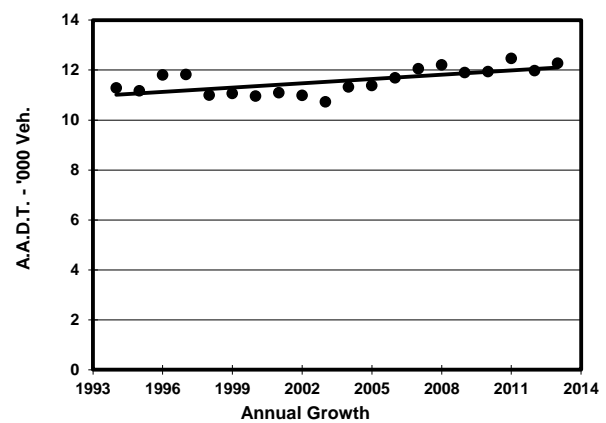
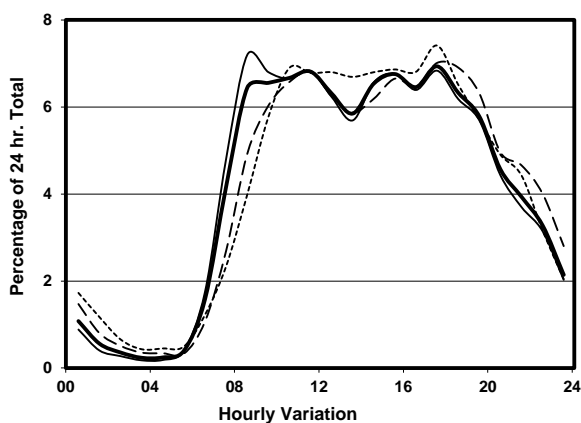
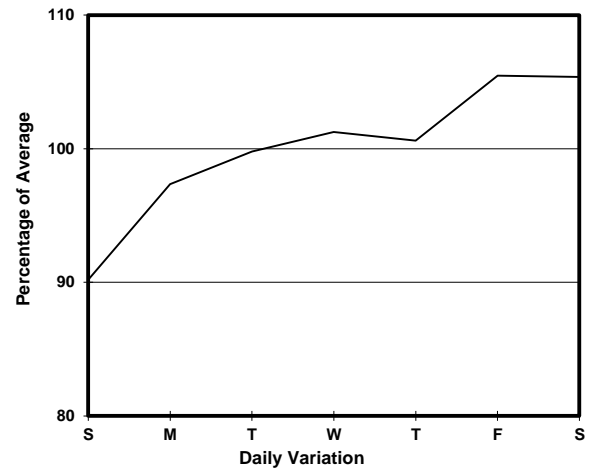
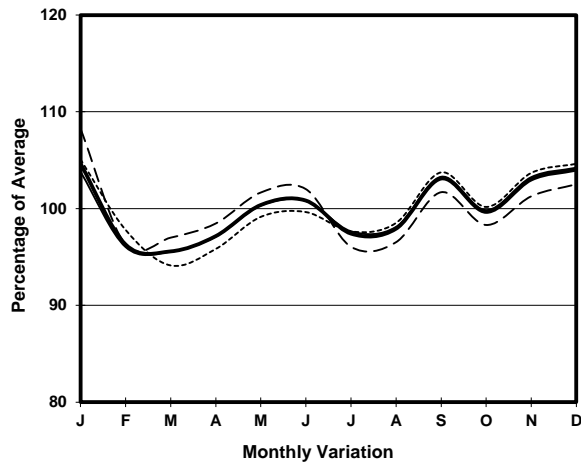
YEAR

2013

LINK PEAK RD (from MT. AUSTIN RD to MAGAZINE GAP RD)

CORE STATION
ROAD NETWORK
ROAD TYPE1014
MAJOR
DISTRICT DISTRIBUTOR

1. TRAFFIC FLOW VARIATION AND GROWTH



2. TRAFFIC CHARACTERISTICS (BY DIRECTION)

Parameter	All - Day	Mon. - Fri.	Sat.	Sun.
EAST BOUND				
A.A.D.T.	6200	6270	6720	5550
R 12 / 24 - %	74.8	76.1	71.4	71.7
R 16 / 24 - %	93.3	93.9	92.1	91.3
AM Peak Hour	0900-1000	0800-0900	0900-1000	0900-1000
One-way flow at AM peak hour	440	460	430	330
T - % (AM)	-	-	-	-
PM Peak Hour	1700-1800	1700-1800	1800-1900	1700-1800
One-way flow at PM peak hour	410	410	490	390
T - % (PM)	-	-	-	-
Prop.of commercial vehicles - 16 hr.	-	-	-	-
WEST BOUND				
A.A.D.T.	6070	6180	6270	5550
R 12 / 24 - %	76.9	77.9	73.4	75.6
R 16 / 24 - %	93.5	94	92.6	92.4
AM Peak Hour	0800-0900	0800-0900	0900-1000	0900-1000
One-way flow at AM peak hour	380	430	350	310
T - % (AM)	-	-	-	-
PM Peak Hour	1700-1800	1700-1800	1700-1800	1700-1800
One-way flow at PM peak hour	440	440	440	440
T - % (PM)	-	-	-	-
Prop.of commercial vehicles - 16 hr.	-	-	-	-

3. OTHER INFORMATION AND COMMENT